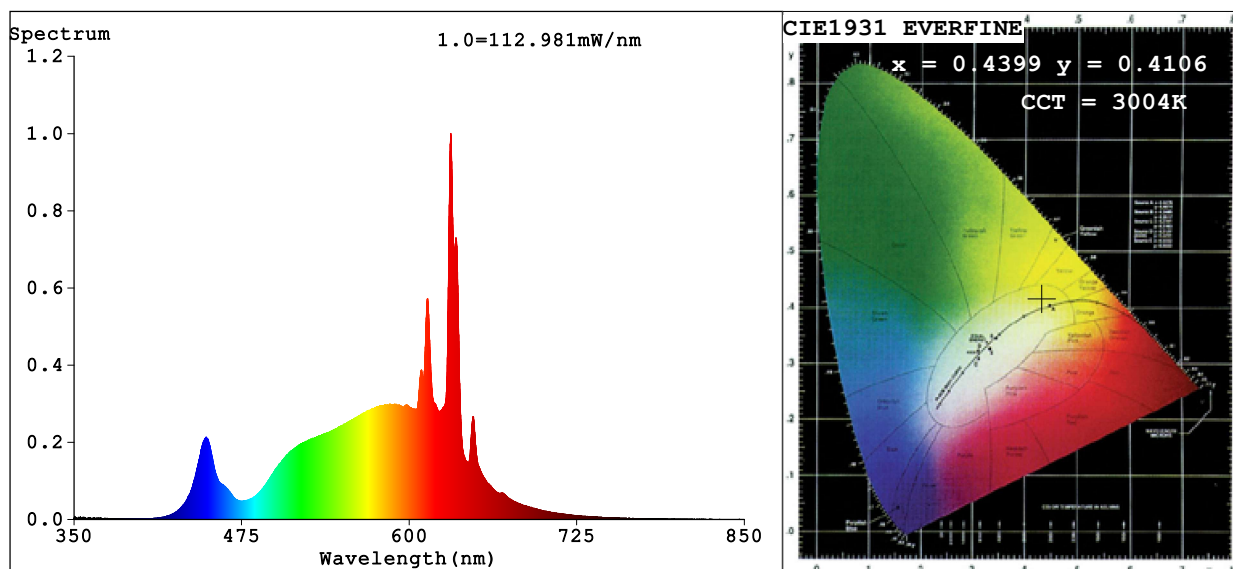


## Spectrum Test Report



### Color Parameters:

Chromaticity Coordinate:  $x=0.4399$   $y=0.4106$   $u'=0.2496$   $v'=0.5244$

CCT=3004K (Duv=0.0022) Dominant WL:Ld =582.1nm Purity=55.3%

Ratio:R=24.2% G=73.6% B=2.2%; Peak WL:Lp=631.0nm FWHM=8.0nm

Render Index:Ra=90.6 CRI=86.7 TM30:Rf=89 Rg=101

R1 =91 R2 =92 R3 =92 R4 =93 R5 =90 R6 =91 R7 =93

R8 =82 R9 =55 R10=81 R11=94 R12=75 R13=91 R14=94 R15=87

### Photo Parameters:

Flux = 2086 lm Eff. : 117.69 lm/W Fe = 6.032 W

### Electrical parameters:

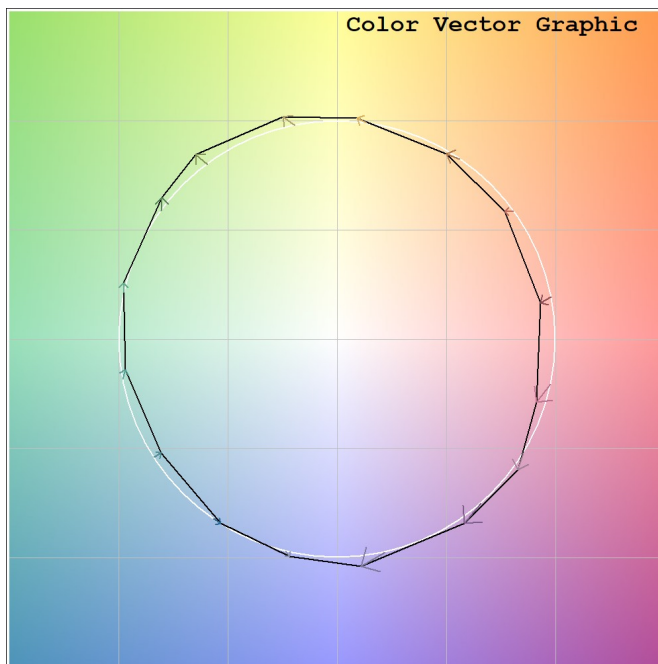
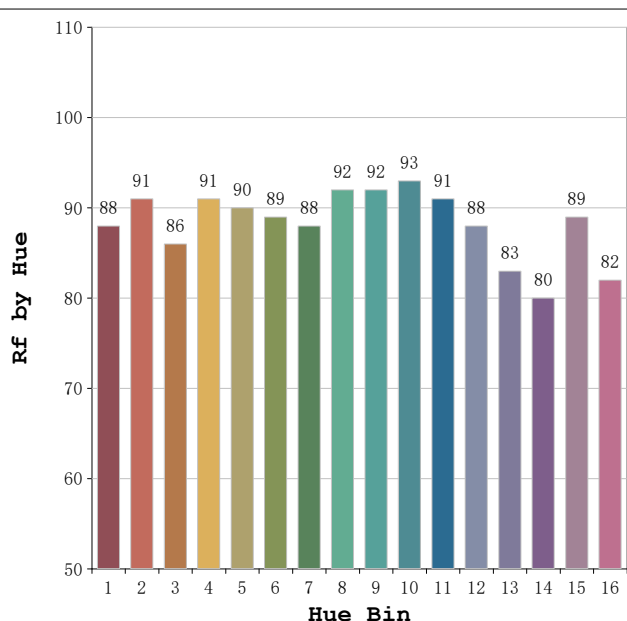
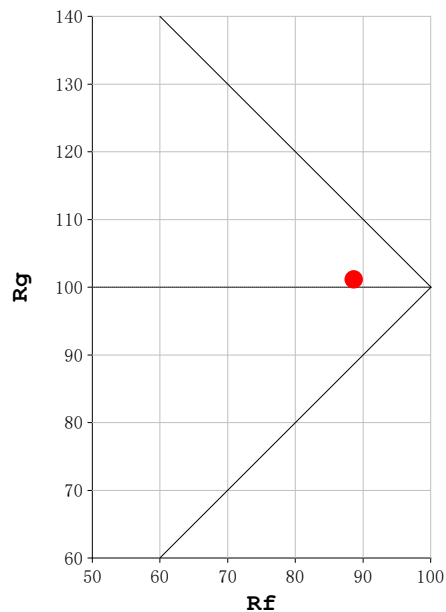
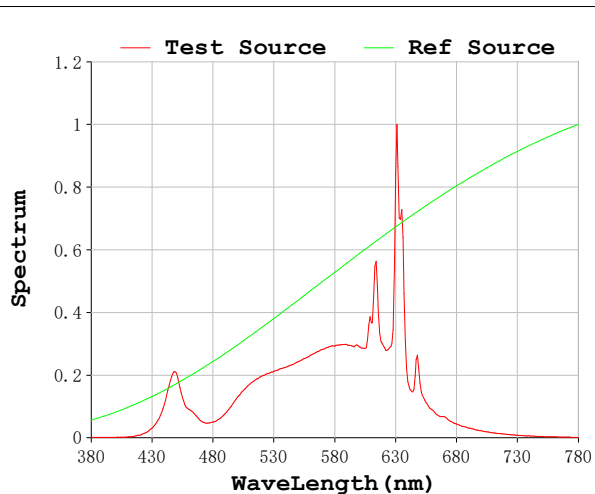
V = 230.15 V I = 0.08603 A P = 17.73 W PF = 0.8953

Status: Integral T = 188 ms Ip = 34629 (53%)

Model:Spotia 18w Negro  
 Tester:Sergio Carneros  
 Temperature:20Deg  
 Manufacturer:Luz Negra

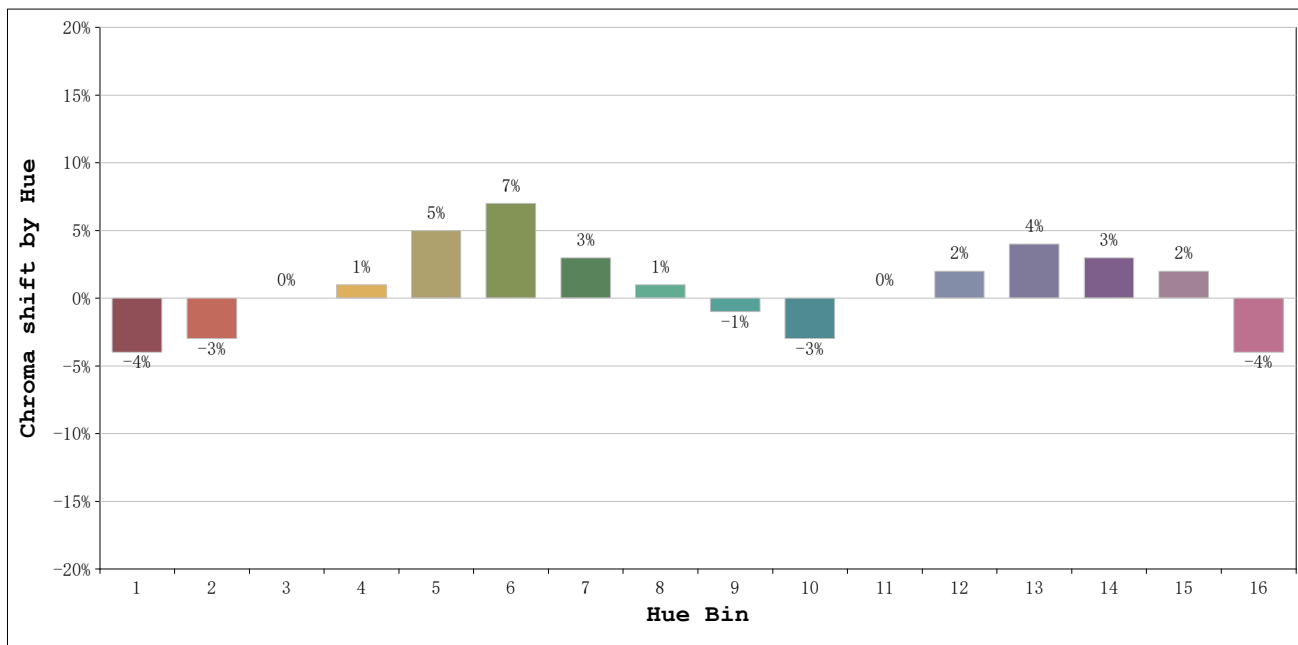
Number:3000k 37°  
 Date:2026-03-23 16:00:58  
 Humidity:50%  
 Remarks:1 unidad

**Rf: 89**      **CCT: 3004 K**      **u': 0.2496**  
**Rg: 101**      **Duv: 0.0022**      **v': 0.5244**



Model:Spotia 18w Negro  
 Tester:Sergio Carneros  
 Temperature:20Deg  
 Manufacturer:Luz Negra

Number:3000k 37°  
 Date:2026-03-23 16:00:58  
 Humidity:50%  
 Remarks:1 unidad



			Graphic shift(%)	
Hue Bin	Hue Angle	Rf	Chroma	Hue
1	0.0° - 22.5°	88	-4	-1
2	22.5° - 45.0°	91	-3	2
3	45.0° - 67.5°	86	0	6
4	67.5° - 90.0°	91	1	4
5	90.0° - 112.5°	90	5	5
6	112.5° - 135.0°	89	7	2
7	135.0° - 157.5°	88	3	-4
8	157.5° - 180.0°	92	1	-3
9	180.0° - 202.5°	92	-1	-3
10	202.5° - 225.0°	93	-3	0
11	225.0° - 247.5°	91	0	4
12	247.5° - 270.0°	88	2	3
13	270.0° - 292.5°	83	4	-11
14	292.5° - 315.0°	80	3	-10
15	315.0° - 337.5°	89	2	-6
16	337.5° - 360.0°	82	-4	-8

Model:Spotia 18w Negro  
 Tester:Sergio Carneros  
 Temperature:20Deg  
 Manufacturer:Luz Negra

Number:3000k 37°  
 Date:2026-03-23 16:00:58  
 Humidity:50%  
 Remarks:1 unidad